



# Трансформации в социальной работе в контексте современного общества

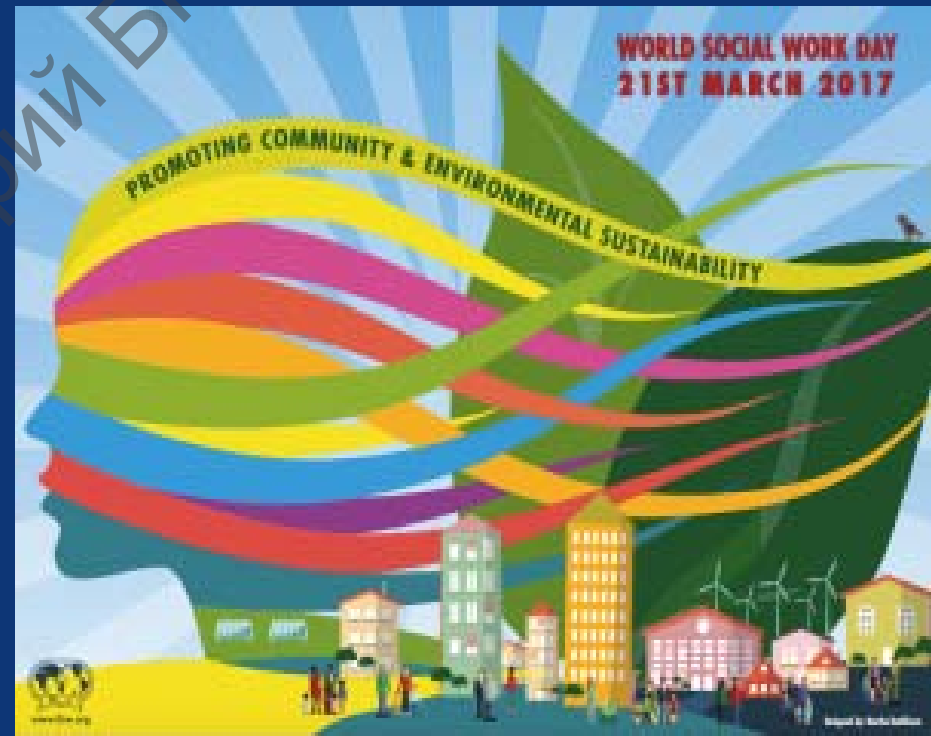
(Transformations in Social Work Under the Transformation Society)

**Dr.Phil. Lolita Vilka**

*Riga Stradins University, Riga, Latvia*

# CONTENTS

- *SOCIAL CHANGES and TRANSFORMATIONS AS THE CONTEXT OF SOCIAL WORK PRACTICE*
- *SOCIAL WORK IN LATVIA: AUTHORITY OF SOCIAL WORK: WHAT THE DISCUSSIONS IN LATVIA ARE ABOUT?*
- *MILAN CONFERENCE (2015): SOCIAL WORK EDUCATION -2025*



# GLOBAL DEFINITION OF SOCIAL WORK



**“Social work is a practice-based profession and an academic discipline** that promotes social change and development, social cohesion, and the empowerment and liberation of people.

Principles of social justice, human rights, collective responsibility and respect for diversities are central to social work.

Underpinned by theories of social work, social sciences, humanities and indigenous knowledge, social work engages people and structures to address life challenges and enhance wellbeing.”

**Социальная работа является практической профессией и академической дисциплиной**, которая способствует общественным изменениям и развитию, содействует социальной сплоченности и укреплению способностей к самостоятельному функционированию людей в обществе, их освобождению.

Принципы социальной справедливости, прав человека и уважения многообразия являются центральными в социальной работе.

Опираясь на теории социальной работы, общественные и гуманитарные науки, специализированные знания, социальная работа вовлекает людей и структуры в решение жизненно важных проблем и повышение благополучия.

# MISSION OF SOCIAL WORK:



## Key words

- social change and development
- social cohesion
- Principles of social justice, human rights, collective responsibility and respect for diversities are central to social work.

## Ключевые понятия

- общественные изменения и развитие
- социальная сплоченность
- Принципы социальной справедливости, прав человека и уважения многообразия

# KEY MESSAGES OF THE GLOBAL AGENDA FOR SOCIAL WORK AND SOCIAL DEVELOPMENT



- Strengthen the influence of social work and social development organizations in international, national and local policy development from which to actively engage in policy and community development and social action. The four priority areas are:



- I. Promoting social and economic equalities-addressing the impact of discrimination and oppression, social injustice and other human rights violations
- II. Promoting the dignity, diversity and worth of all peoples
- III. Considering environmental and community sustainability of any actions
- IV. Strengthening recognition of the importance of human relationships



# CONTEMPORARY SOCIETY:



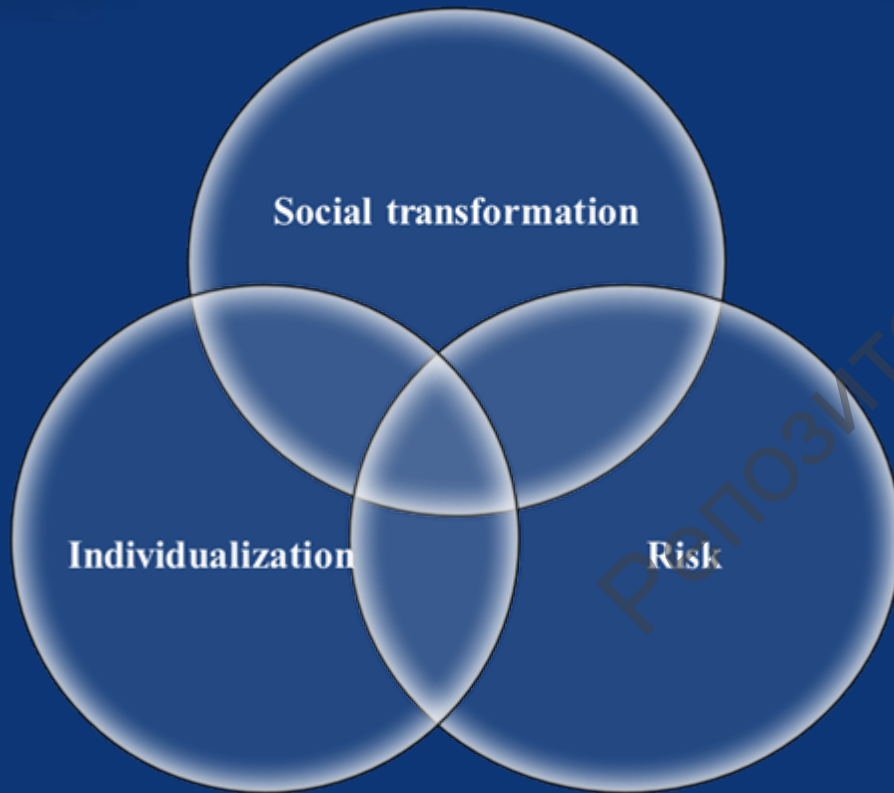
*....those shanges are of greatest social consequence which alter either (1) the size or distribution of population; or (2) the distribution of wealth; or (3) which make new contacts among men; or (4) which add to the sum of knowledge. Such changes carry within them the possibility of new or redirected desires and thus new social ideals, and in the end a modified social social heritage or social order.*

*(Walter Greenwood Beach, 1925)*

“This is far more than a social change. **It is a change in the human condition.** What it means--what are the values, the commitments, the problems, of the new society-we do not know. But we do know that much will be different”.

*(P.Drucker, 1994)*

# SOCIAL TRANSFORMATIONS: CHANGES AND DEVELOPMENT



✓ **Social change**, in sociology, the alteration of mechanisms within the social structure, characterized by changes in cultural symbols, rules of behaviour, social organizations, or value systems. (*Britannica*)

✓ “Modification of basic institutions during a specific period” (*A. Giddens*)

✓ Technological, economic, political, religious, ideological, demographic, and stratification factors are all viewed as potentially independent variables which influence each other as well as the course of Society. (*Etzioni, 1964*)

**«Новый мир новых миров, в котором оказался человек.»**

(В. Г. Федотова , профессор, академик РАН)

# THE GLOBAL UNCERTAINTY: HOW TO ACHIEVE THE SENSE OF SECURITY UNDER CONDITIONS OF UNCERTAINTY?

## *Four global tendencies:*

Social Work client's wellbeing, the development of the welfare state and our whole social system is affected by the

- ✓ Economic crisis,
- ✓ The inequality crisis,
- ✓ The demographic crisis,
- ✓ The commodity crisis (like peak oil) and the ecological crises.



*Lievens P. (Belgium)*



# SOCIAL WORK IN LATVIA

The roots of social work education in the Baltic States formed simultaneously with the rebirth of social work education in Eastern European and Central-Eastern European countries in the last decade of the 20<sup>th</sup> century.

- **1991.** - Foundation of the first SW higher school in the Baltic countries.
- **1996.** - Establishing the association of Professional social and care workers of Latvia
- **1996.** - Social work profession is included in Profession classification
- **1996.-** Social work approved as a sub-branch of sociology :

***“Social policy and organisation of social work”.***

- **2003.-** *“Law on Social services and social assistance”*

**Social work becomes one of the most important instruments in practical implementation of social policy in provision of social services.**

# HOW THE SOCIAL WORK IN LATVIA FACES THE SOCIAL TRANSFORMATIONS?

- Global financial – economic crisis (2009.-2012.) impacts:

## Who are the clients of Social Workers ?

- ✓ 2016. - 424 thousand persons or 21.8 % of Latvia population were at risk of poverty (CBS)
- ✓ Poverty of working people
- ✓ 31.3% of children and adolescents below 17 years are of risk live in poverty or social exclusion
- ✓ unemployment rate - 9.5%
- ✓ institutional care of children ~ 7967
- ✓ Families at risk and orphans of living parents

	2012	2013	2014	2015
Dinamics of inhabitants of Latvia	2 023 825	2 001 468	1 986 096	1 968 957

# **AUTHORITY OF SOCIAL WORK: WHAT THE DISCUSSIONS IN LATVIA ARE ABOUT**

- Prestige of social work
- Burnout of professionals
- Dropout from the profession
- Authority and image of social work
- What the social demand is the social work profession to?
- What kind of social work professionals do we need?
- What kind of the knowledge social workers have to acquire to respond on contemporary issues?
- Does SW professionals are ready for change?

**Global financial – economic crisis  
(2009.-2012.) impacts:  
pre and post-crisis social work.**

**Academic discourse  
on the social work profession  
significantly differs from  
the public discourse**

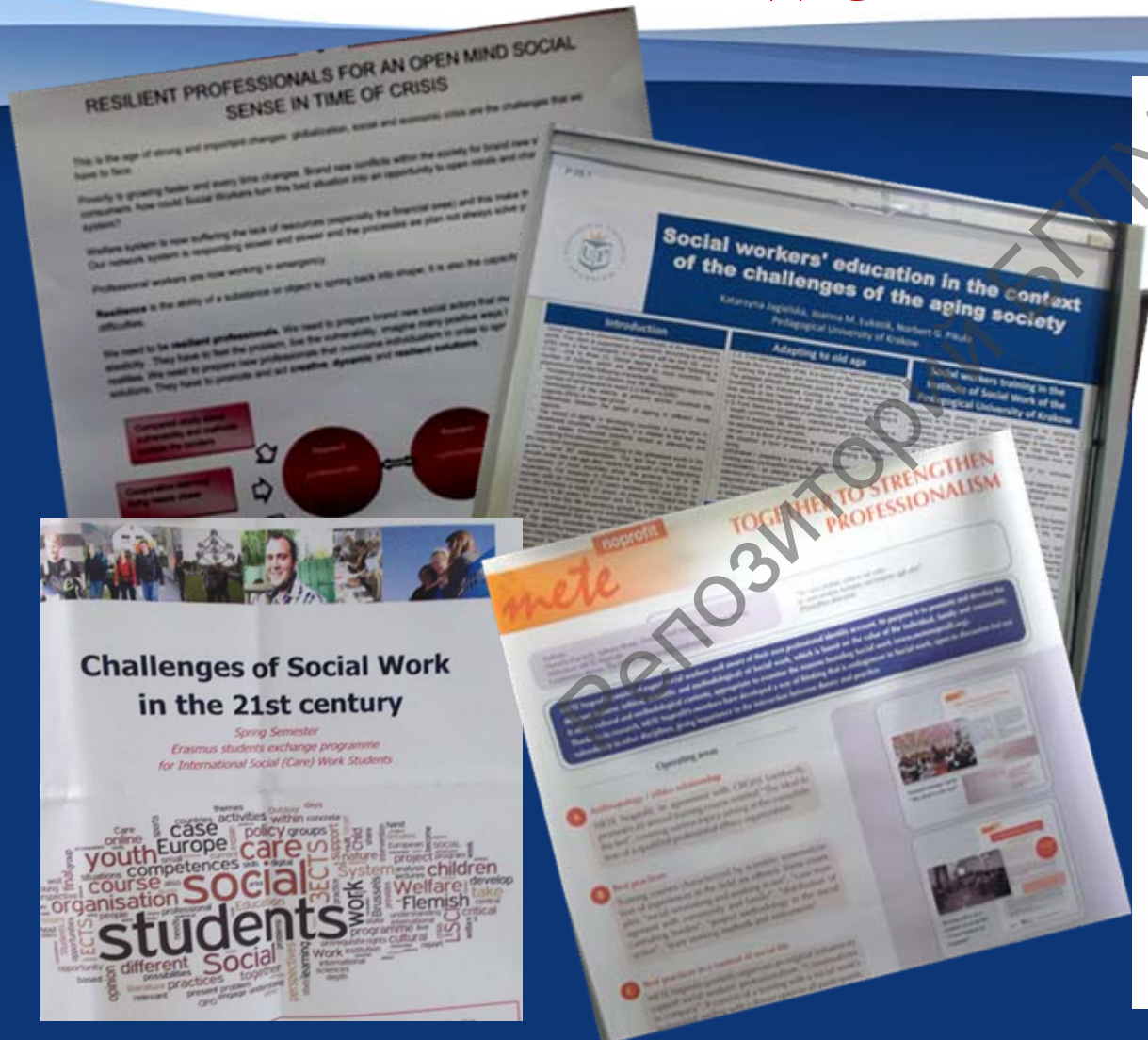
# OPEN MINDED SOCIAL WORKER IS THE SOCIAL DEMAND TO THE PROFESSIONALS OF SOCIAL WORK

- Transformations in values and meanings of the concepts
- The meaning of the concept «*social*»

Проблематизация  
реальности и  
проблематизация  
собственной жизни, жизни  
каждого человека  
составляет одну из задач  
философии и науки».

(В. Г. Федотова , профессор,  
академик РАН)

# MILAN CONFERENCE (2015) ON SOCIAL WORK



EASSW - European Association  
of Schools of Social Work

**EASSW**

**AIDSS**

## Social Work Education in Europe: towards 2025

Milan, Italy

29th June - 2nd July 2015

Bicocca University

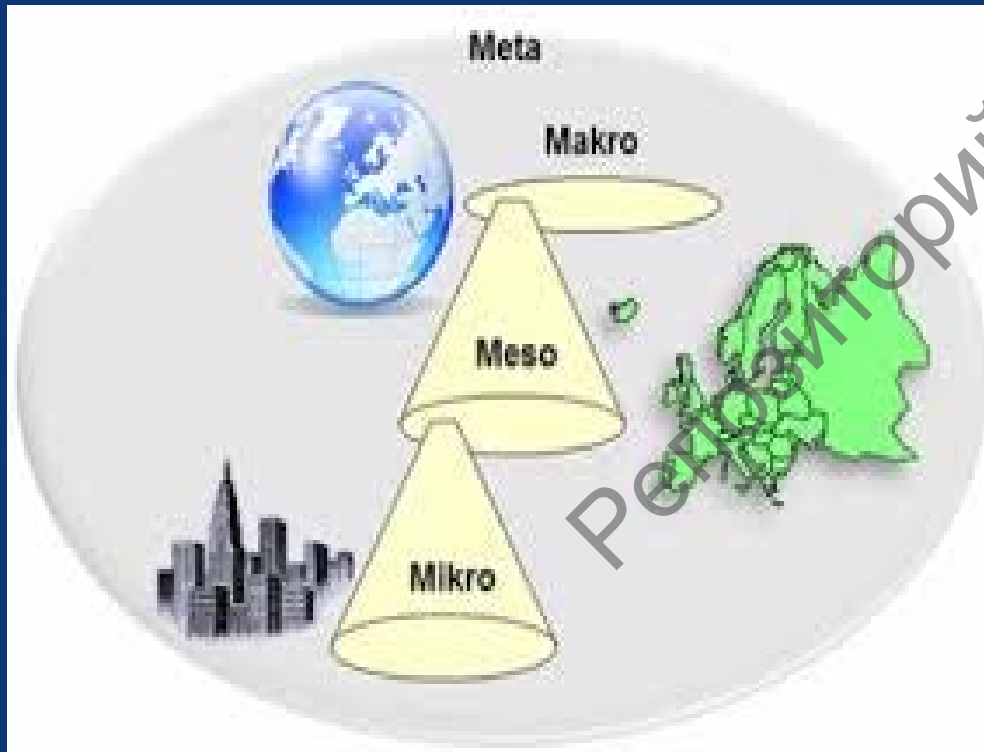
Organizing Partner

**UNIVERSITA' DEGLI STUDI  
DI MILANO  
BICOCCA**

DIPARTIMENTO DI SOCIOLOGIA  
E RICERCA SOCIALE



# DOES SOCIAL WORK CAN DEVELOP WITHOUT THE GLOBAL PERSPECTIVE?



**Think globally – act locally!**

- ✓ Social work with society
- ✓ Social capital development
- ✓ Transformational social work will improve the resilience of our social system in times of crises.

*Lievens P. (Belgium)*

# THE FOCUS ON CRITICAL DIMENSION IN SOCIAL WORK THEORY AND PRACTICE

- ✓ Reflective practice
- ✓ Critical approach
- ✓ Critical pedagogy
- ✓ Critical thinking
- ✓ Critical and reflective practice
- ✓ The development of critical social work practice
- ✓ Creativity and cooperative work



# E A S S W

- ✓ Helping only makes sense when **directed beyond the single case** so that general connections become visible, 'general forces' impinging in people's lives can be identified and 'tamed'- or utilised
- ✓ Helping requires a **paradigm shift** from mere compassion to scientific analysis in order to be able to recognise regularities and causal links (without losing a basic humanistic orientation)
- ✓ Helping only works in **partnership** – doing something to people is not only ethically suspect but also practically ineffective.
- Helping requires a vision of a '**better life**'
- ✓ Social work's mandate is to address the tension between 'the right to be different' and 'right to be equal' theoretically and practically.
- ✓ **Social work is a dialectical project that does not reconcile alternatives but 'opens up space in which future can be imagined and realized'**

*/Walter Lorenz/*

# Thank you!

[Lolita.Vilka@rsu.lv](mailto:Lolita.Vilka@rsu.lv)



PresenterMedia



PresenterMedia